

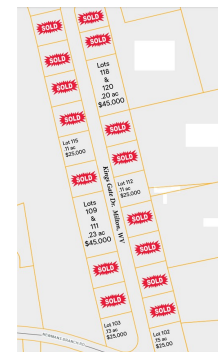


\$ 45,000



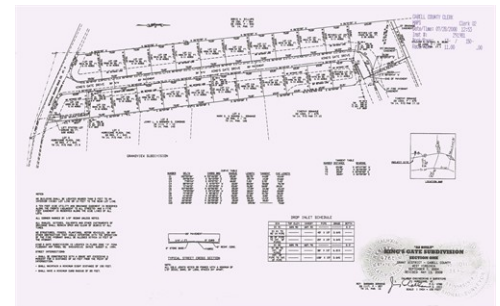
109 & 111 Kings Gate Drive, Milton, WV 25541

- » MLS #: 178732
- » Land
- » More Info: 109111KingsGateDrive.IsForSale.com



Brody Nash
 (304) 208-6190 (Mobile)
 (304) 736-6655 (Business)
 brody@brodynash.com
<http://www.brodynash.com/>

Homes and Land Real Estate, Inc.
 6007 US Route 60 E
 Suite 240
 Barboursville, WV 25504
 (304) 208-6190



Welcome to the beautiful Kings Gate subdivision in Milton, WV! With a concrete street and all utilities underground, including public water, sewer, electricity, and gas, it's easy to connect to the grid and build your home. Located just minutes from downtown Milton, I-64, and Milton schools, these lots are situated in a well kept neighborhood with easy access to major highways, making it a great location for commuters to both Huntington and Charleston. A new home here would also be an easy 30 minute commute to the new Nucor Steel mill in Apple Grove. The subdivision is located in the highly-regarded Cabell Midland School District, providing top-notch education opportunities for families. Additionally, the town of Milton offers a range of amenities, including parks, restaurants, and shops. Overall, these subdivision lots offer a prime opportunity to build your ideal home in a tranquil and convenient location.

